



# Beechers Court

Beckenham BR3







# Beechers Court

Beckenham BR3

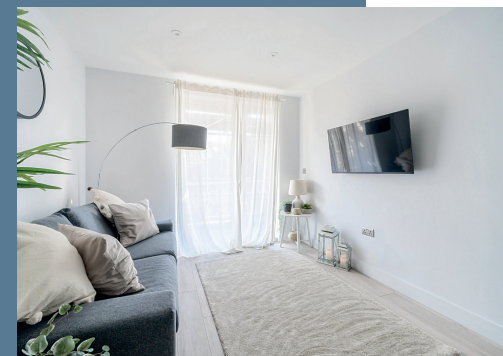
Discover modern living in the heart of Beckenham with our exceptional collection of 1 & 2 bedroom apartments. Designed with space and contemporary aesthetics in mind, these new apartments offer a bright and welcoming atmosphere to call home.

Open-plan layouts that seamlessly integrate living, dining, and kitchen areas, create an inviting space for both relaxation and entertaining. Light Oak laminate flooring adds a touch of sophistication throughout, complementing the modern design of each home.

Equipped with high-end appliances including a Bosch oven and hob, integrated dishwasher, fridge/freezer and washer/dryer, catering with ease and efficiency to all needs.

Luxurious bathrooms with porcelain tiles provide a tranquil retreat for self-care and rejuvenation. Selected apartments feature private balconies, ideal for the warmer months.

Your security and peace of mind are assured with an audio/video entry system providing added convenience and safety for residents. Plus, with a 10-year build warranty, you can rest easy knowing that your home is protected for years to come.









## General

Electric Heaters

Pressurised Hot Water  
Storage Tank

LED Downlights to all Rooms

TV Points in Lounge

Pre-Wired for Fibre Broadband

Light Oak Laminate Flooring  
Throughout (Excluding Bathrooms)

Audio/Video Entry System

MVHR (Mechanical Ventilation  
Heat Recovery System)

10 Year Build Warranty With ICW

## Kitchens

Integrated Appliances:

- Bosch Oven and Hob
- Integrated Dishwasher
- Integrated Fridge/freezer
- Integrated Washer/Dryer

Contemporary Grey Gloss  
Kitchen Cabinets

Contrasting Quartz Stone  
Worktops

## Bathrooms

Modern Fully-tiled

Wall-hung Sanitaryware

Chrome Towel Rail, Fixtures and  
Fittings

Shaver Points

Fullsize Mirror



Generously proportioned  
bedrooms are flooded with  
natural light.







## Apartments 1 & 8

Kitchen/Living/Dining  
5.5m x 3.2m

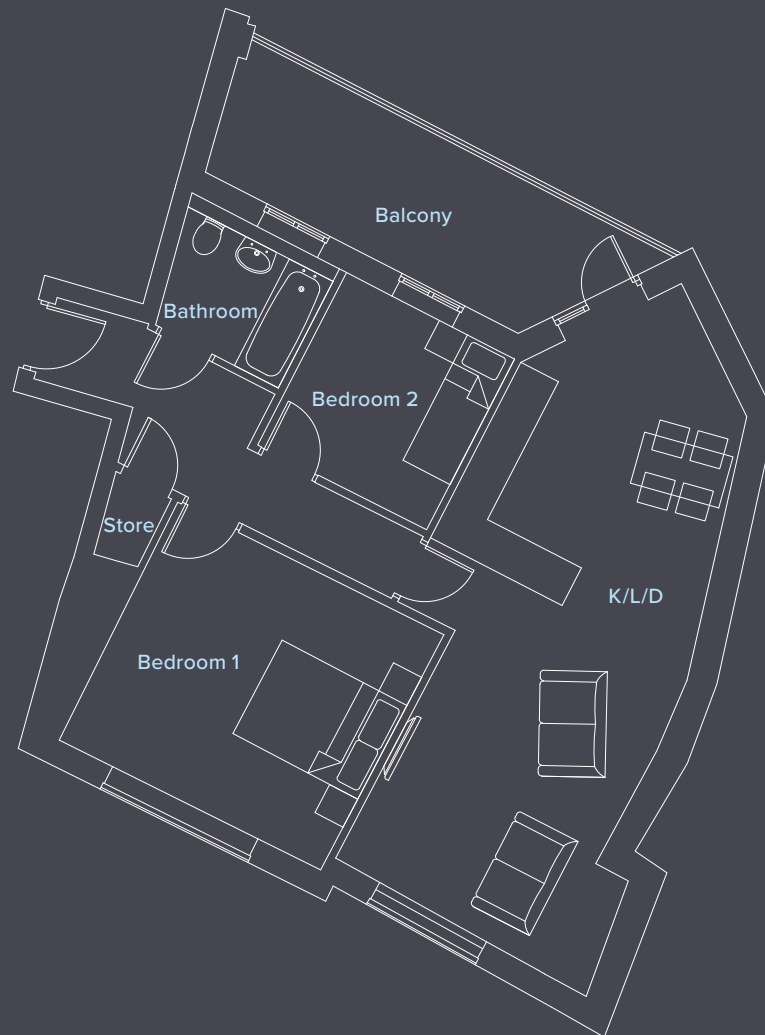
Bedroom  
4.5m x 3.5m



First Floor



Second Floor



## Apartments 2 & 9

Kitchen/Living/Dining  
9.6m x 4.2m

Bedroom one  
4.1m x 3.7m

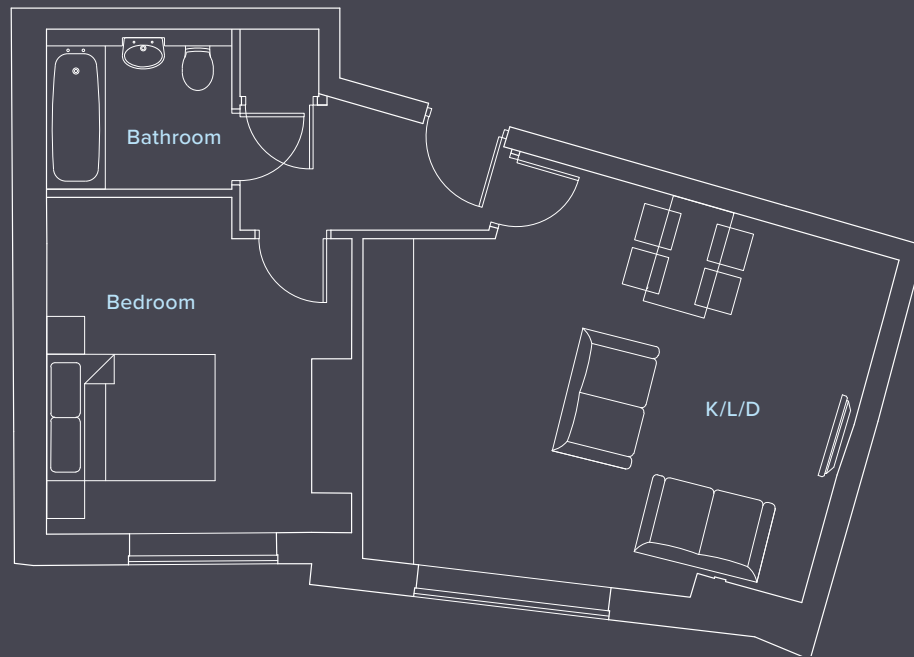
Bedroom two  
2.7m x 2.7m



First Floor



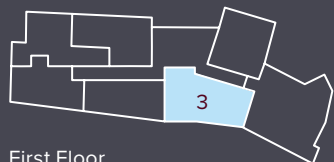
Second Floor



## Apartments 3 & 10

Kitchen/Living/Dining  
6.3m x 4.9m

Bedroom  
4m x 3.6m

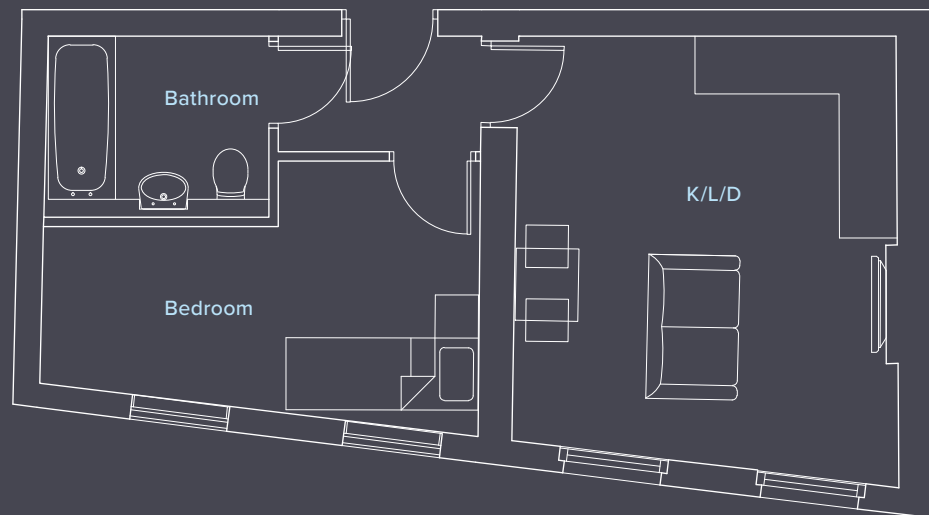


First Floor



Second Floor

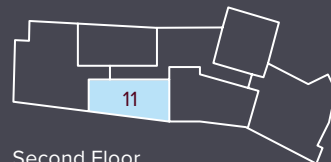


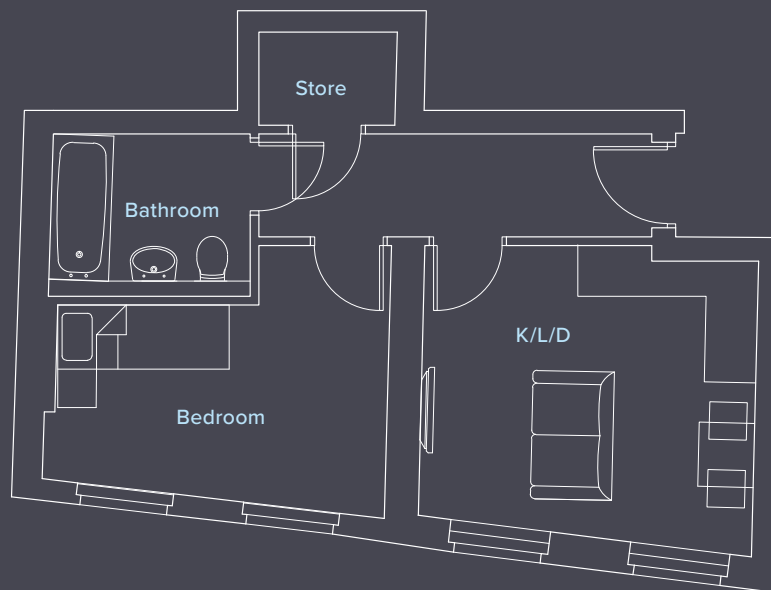


## Apartments 4 & 11

Kitchen/Living/Dining  
5.7m x 4.9m

Bedroom  
4.5m x 3.6m





## Apartment 5

Kitchen/Living/Dining  
3.9m 3.4m

Bedroom  
3.8m x 2.8m



First Floor



## Apartment 6

Kitchen  
2.5m x 2.1m

Living/Dining Area  
4.8m x 2.6m

Bedroom  
3.5m x 3m



First Floor



## Apartment 7

Kitchen/Living/Dining  
4.3m x 3.2m

Bedroom  
3.2m x 3.2m



First Floor



## Apartment 12

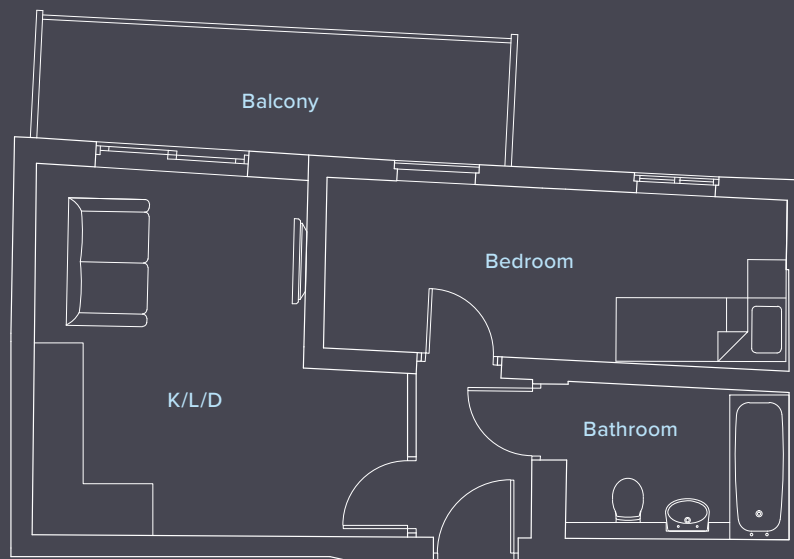
Kitchen/Living/Dining  
6.9m x 4m

Bedroom one  
4m x 3.4m

Bedroom two  
5.4m x 3m



Second Floor



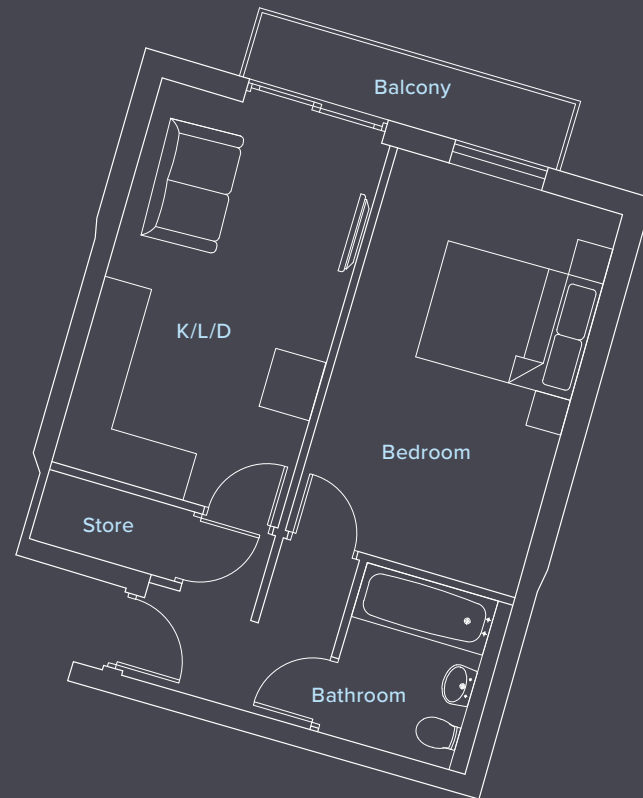
## Apartment 13

Kitchen/Living/Dining  
4.4m x 3.4m

Bedroom  
3.4m x 2m



Second Floor



## Apartment 14

Kitchen/Living/Dining  
4.9m x 3m

Bedroom  
4.9m x 3.4m



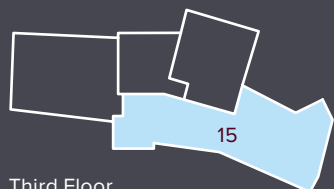


## Apartment 15

Kitchen/Living/Dining  
7.7m x 5.3m

Bedroom one  
3.7m x 3.1m

Bedroom two  
4.4m x 3.6m







## Apartment 16

Kitchen/Living/Dining  
6.6m x 3.5m

Bedroom one  
3.5m x 3.2m

Bedroom two  
4.4m x 3.6m



## Piccolo Café

Beckenham High Street

Provides freshly prepared Mediterranean dishes created by their culinary in house expert. Great selection of wines and cocktails only using the finest ingredients.



## Pera Beckenham

Beckenham High Street

Fancy a night off cooking? Pera provides the perfect spot for casual dinner plans with a menu packed full of turkish/mediterannean dishes as well as a large selection of cocktails.



## Blackbird Bakery

Beckenham High Street

A South London favourite. A one-stop shop for everything from freshly made bread, sandwiches, pastries, daily cake offerings and local coffee.

## The George Inn

Beckenham High Street

You'll always find a warm welcome at The George Inn in Beckenham. It's a place where you can enjoy the day whether you fancy a few rounds, a spot of lunch or a cosy meal.







## Kelsey Park

### Manor Way

Just a short walk from Beechers Court, Kelsey Park offers the perfect spot for a Sunday Stroll around the pond, or stop at the Cafe for a coffee.

## Beckenham Place Park

### Beckenham Hill Road

Beckenham Place Park is a large park located near Beckenham. The Palladian-style mansion that gave the park its name now serves as a community centre and café.



## Papilo

### Beckenham High Street

A concept and lifestyle, an opportunity to take time out and unwind in an ambient atmosphere, bringing together community, friends and family.

## Fee & Brown

### Beckenham High Street

Beautiful coffee shop serving locally sourced cakes, pastries, artisan sandwiches and salads.





# Commuting is easy with Beckenham Junction just a short walk away.

## Walking

Beckenham Junction

7 Mins

Clock House

12 Mins

Kent House

20 mins

## Train

*from Beckenham Junction*

Crystal Palace

10 Mins

Bromley

7 Mins

London Victoria

23 Mins

London Bridge

38 Mins

## Tram

*from Beckenham Junction*

East Croydon

26 Mins

Wimbledon

47 Mins

Please note - Train times shown are correct at time of print, from Beckenham Junction.  
Source: Trainline - Tram times shown from Beckenham Junction, Source: tfl.gov.uk





# Beechers Court

Beckenham BR3 1AG

For more information contact:

020 8315 6996  
[acorngroup.co.uk/beechers](http://acorngroup.co.uk/beechers)

Development Consultants:



ORCHARD  
HOLDINGS

Selling Agents:



**acorn**  
New Homes



These particulars are provided as a guide to what is being offered and are subject to contract and availability. Whilst showing the general specification and design of the properties, we reserve the right and liberty at our discretion to amend or vary. All measurements are approximate and taken at the maximum points and should not be relied upon. Layouts, sizes and specification are not final and may change at the developer's discretion. We advise that any prospective purchasers employ their own independent experts to verify the statements herein. Map for reference purposes only. Not to scale. All information and images provided are the property of Acorn and may not be used or replicated in part or full without prior permission from Acorn.



