



Thyme
HOMES

DURNSFORD COURT

WIMBLEDON

144 - 146 DURNSFORD ROAD, WIMBLEDON, SW19 8HJ



ABOUT THYMES HOME

Thyme Homes is a highly respected developer with a proven track record of creating high-quality, luxury residences across London and its surrounding areas. With years of industry expertise, they are renowned for their meticulous attention to detail, superior craftsmanship, and unwavering commitment to excellence.

Every home by Thyme Homes is thoughtfully designed to blend modern architecture with premium finishes, ensuring a perfect harmony of style, comfort, and functionality. Their dedication to quality guarantees that each project is completed to the highest standards, providing residents with exceptional living spaces tailored for contemporary lifestyles.



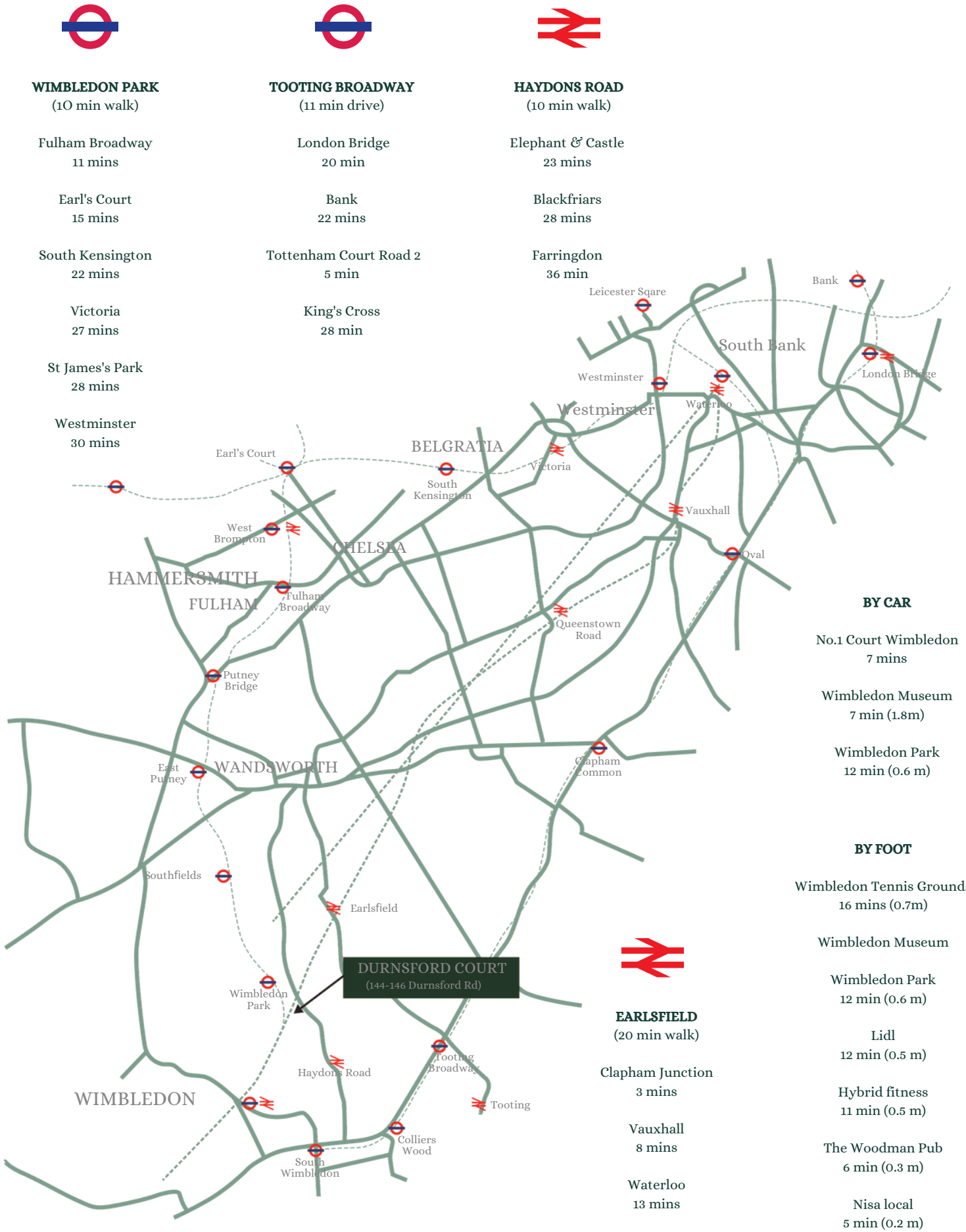
About The Development

Introducing Durnsford Court, a stunning new development by Thyme Homes, located in Wimbledon. This contemporary project comprises eight luxurious flats, ranging from modern one and two-bedroom apartments, thoughtfully designed to offer the perfect blend of style, comfort, and functionality.

Elegant Living Spaces

Each apartment boasts a spacious open-plan living area, designed for modern living. The interiors are elevated with underfloor-heated herringbone wooden flooring, adding warmth and sophistication. Select apartments also feature private balconies, creating a seamless indoor-outdoor living experience. Experience contemporary luxury at Durnsford Court – where every detail is designed for exceptional living.







GROUND FLOOR BLOCK A

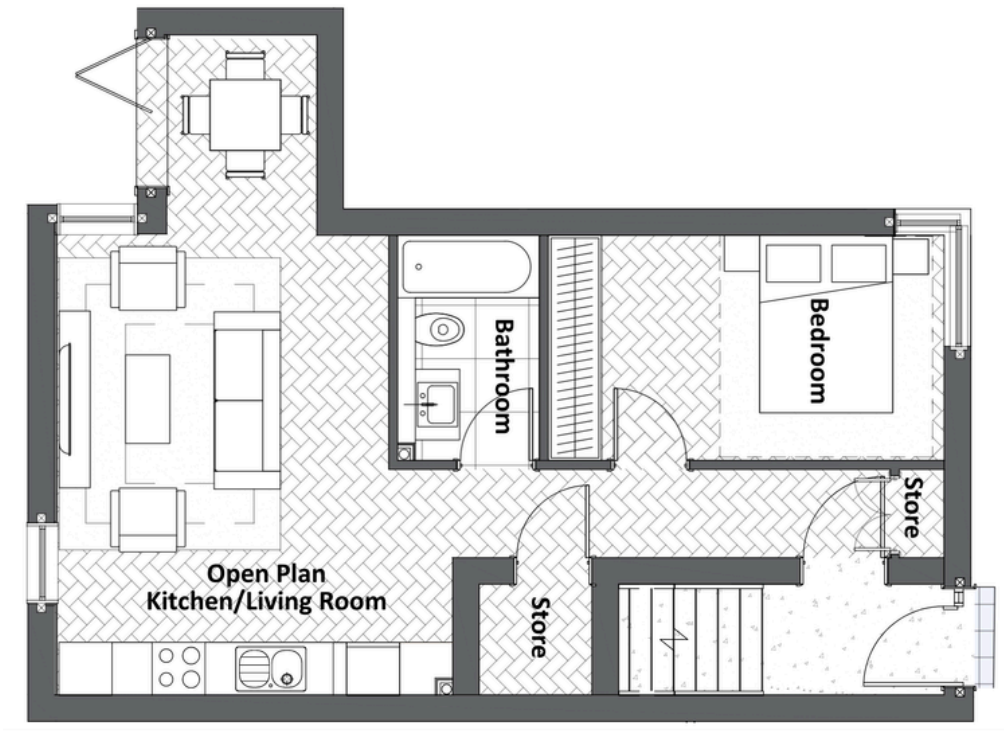
Flat 1 - 1 Bedroom / 1 Bathroom

Total area: 38.5 sq m



FLAT 2 - 1 Bedroom / 1 Bathroom

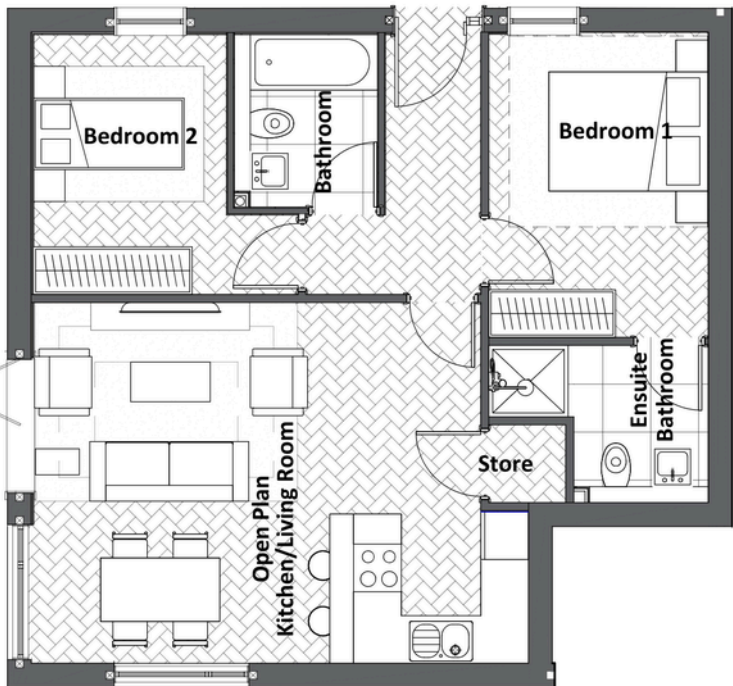
Total area: 51 sq m



GROUND FLOOR BLOCK A

Flat 3 - 2 Bedroom / 2 Bathroom

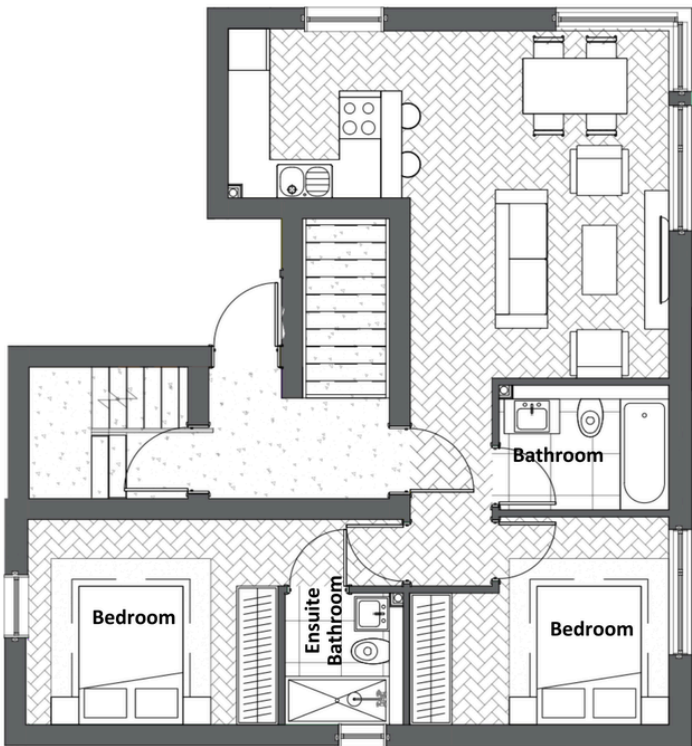
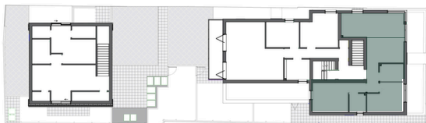
Total area: 63.5 sq m



FIRST FLOOR BLOCK A

Flat 4 - 2 Bedroom / 2 Bathroom

Total area: 62 sq m

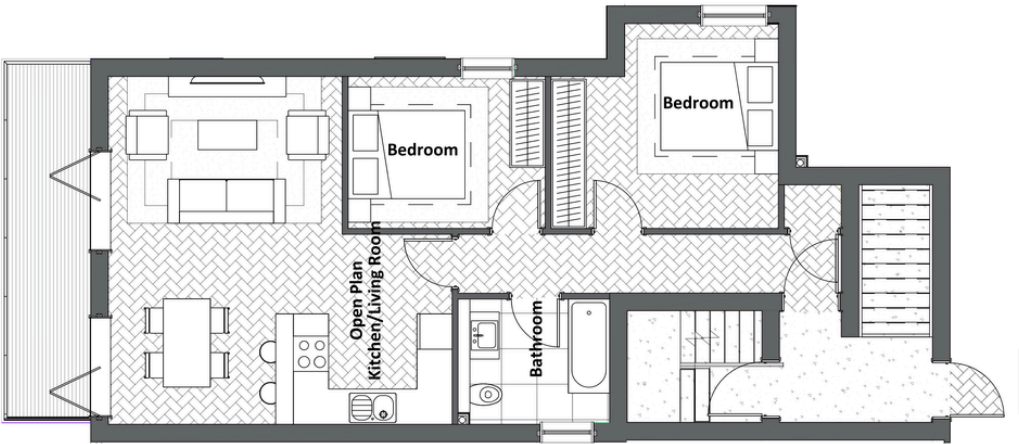
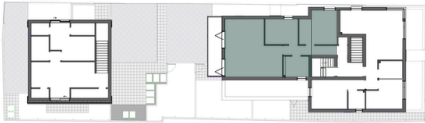




FIRST FLOOR BLOCK A

Flat 5 - 2 Bedroom / 1 Bathroom

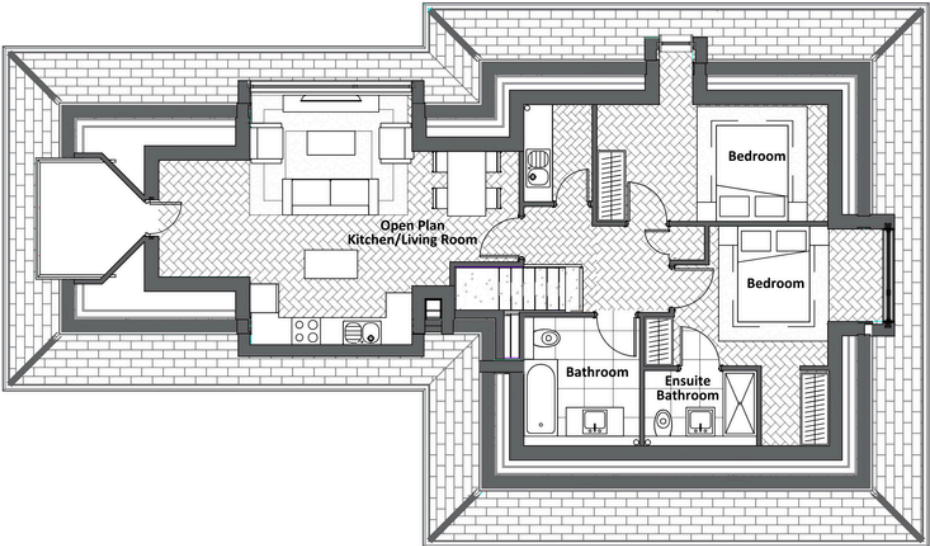
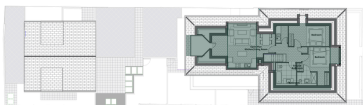
Total area: 64.5 sq m



SECOND FLOOR/LOFT BLOCK A

Flat 6 - 2 Bedroom / 2 Bathroom

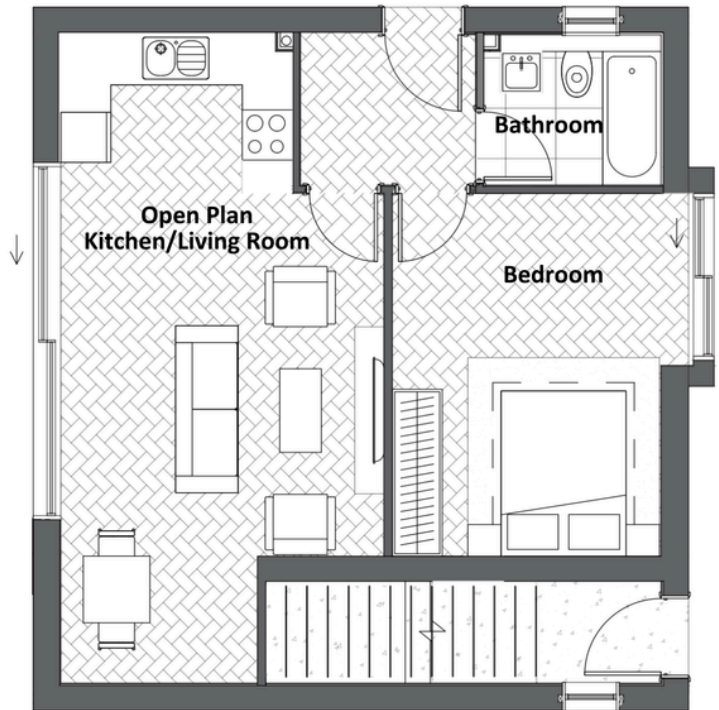
Total area: 89 sq m



GROUND FLOOR BLOCK B

Flat 7 - 1 Bedroom / 1 Bathroom

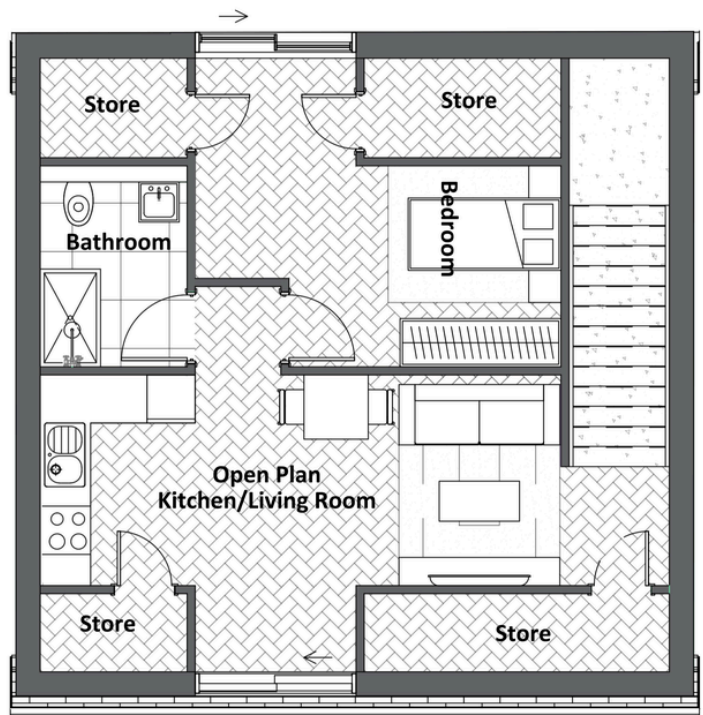
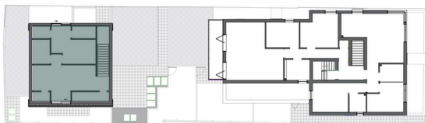
Total area: 52 sq m



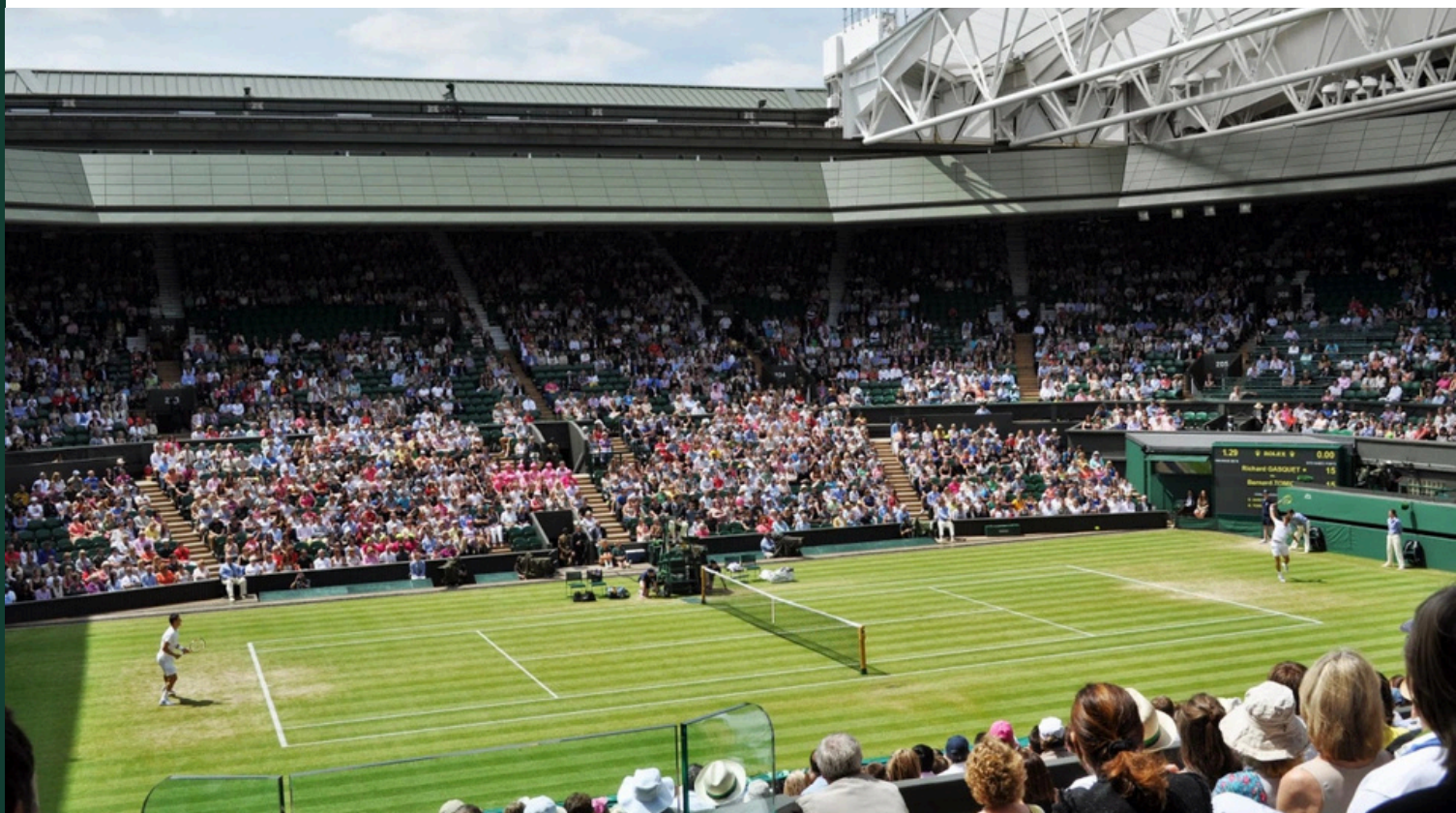
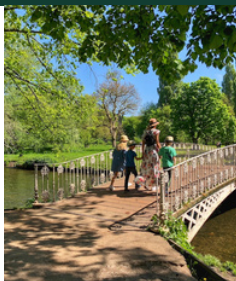
FIRST FLOOR BLOCK B

Flat 8 - 1 Bedroom / 1 Bathroom

Total area: 40.3 sq m







WIMBLEDON IS A VIBRANT AND DIVERSE DISTRICT IN SOUTHWEST LONDON.

Just a short 15-minute train ride from Central London, Wimbledon offers the perfect blend of city convenience and suburban charm, making it one of London's most desirable places to live. The area is renowned for its rich sporting heritage, most notably as the home of the world-famous All England Lawn Tennis Club, which hosts the annual Wimbledon Championships. Sports enthusiasts can also take advantage of several prestigious golf courses, including the historic Royal Wimbledon Golf Club, top-tier riding stables, and numerous tennis and croquet clubs.

*Escape, unwind, and
recharge;
your perfect
destination just a
short distance from
Central London*

*Live where
history, culture,
and green spaces
collide*



Beyond its sporting legacy, Wimbledon boasts a thriving shopping, dining, and cultural scene. The charming Wimbledon Village is lined with boutique shops, cozy cafés, and high-end restaurants, offering a relaxed yet sophisticated atmosphere. For a more extensive retail experience, Centre Court Shopping Centre provides a mix of popular high-street brands and independent stores. Food lovers can explore a diverse selection of international cuisines, from fine dining establishments to casual eateries and trendy brunch spots.

Culture thrives in Wimbledon, with the New Wimbledon Theatre hosting an exciting line up of West End productions, comedy shows, and live performances throughout the year. Art enthusiasts can explore local galleries showcasing both contemporary and classic works, while history lovers can visit Wimbledon Windmill Museum, which offers fascinating insights into the area's past.



*An elegant village
with timeless charm
and character*

Nature lovers are also well catered for, with plenty of green spaces and outdoor recreational opportunities. While Wimbledon Common remains a highlight with its vast woodland, walking trails, and tranquil ponds, residents can also enjoy the beautifully landscaped gardens of Cannizaro Park or venture slightly further to Richmond Park, famous for its roaming deer and breathtaking panoramic views.

With its excellent schools, outstanding transport links, and a mix of modern apartments and charming period homes, Wimbledon appeals to families, professionals, and retirees alike. Its vibrant community, rich history, and array of amenities make it a highly sought-after location that offers an exceptional quality of life.

Discover Things To Do In Wimbledon

- **Visit the Wimbledon Windmill Museum** – Discover the rich history of the iconic windmill and the area's agricultural past.
- **Tour the All England Lawn Tennis Club** – Take a guided tour of the world-renowned club where the prestigious Wimbledon Championships are held.
- **Relax in Cannizaro Park** – Unwind in this beautifully landscaped park, perfect for a peaceful stroll or picnic.
- **Get Active at Wimbledon Park** – Whether you enjoy sports or simply want to take in the scenery, this park offers something for everyone.
- **Shop at Wimbledon Village** – Browse the charming boutiques, stylish shops, and independent stores for a unique shopping experience.
- **Catch a Movie at Wimbledon's Arthouse Cinema** – Enjoy an independent film in this cozy, local cinema.
- **Discover Southside House** – Explore the fascinating history and beautiful grounds of this 17th-century manor house.
- **Saddle Up at Wimbledon Village Stables** – Experience the charm of equestrian life with horse riding lessons and stables in the heart of Wimbledon.
- **Visit Buddhapadipa Temple** – Find peace and tranquility at London's first Thai Buddhist temple, a stunning and serene spot to reflect.
- **Dine in Style** – Wimbledon offers a wide range of dining options, from cozy cafés to elegant restaurants, catering to all tastes.

DESIGN & SPECIFICATIONS

WHERE STYLE MEETS FUNCTIONALITY

- Contemporary styled kitchens
- Incorporating stone worktops
- 4 zone induction hob
- Fully integrated larder fridge/freezer
- Integrated dishwasher
- Stainless steel under mounted
- Bowl sink with chrome
- Mixer tap
- LED under wall unit lighting
- Power sockets
- Integrated modern kitchens
- Energy efficient gas-fired central heating
- with mains pressure hot water
- Head and hand held shower to all showers
- Bath with shower and screen to bathroom
- LED Downlights to all rooms
- Bath with concealed central filler and
- retractable hand held shower to master ensuite
- Wall hung WC with chrome dual flush plate



- Wooden herringbone flooring
 - Under floor heating throughout
 - Porcelain tiles
 - Comfortable living rooms
 - Outdoor space to some of the apartments
 - Concealed cistern and soft close seat
 - Heated towel rail to all bathrooms
 - Light switches and sockets to all rooms
 - Porcelain floor tiles with tiled skirting and wall tiles to selected areas to bathroom and ensuites with stone tops
 - Contemporary styled bathrooms
 - Vanity basins with wall mounted chrome taps
 - Bespoke under lit vanity cabinet
- to selected bathrooms
- Inset mirrored cabinet to selected bathroom
 - Full width mirror with LED
 - Lighting to ensuites
 - Walk-in tiled flush showers with fixed square
 - Dimmer control to living room





MORE INFORMATION

Developer

Thyme Homes

Parking

On site - 6 spaces

No. Of units:

8

Location

144-146 Durnsford Road,
London, SW19 8HJ

Completion

End of 2025

Closest Stations

Wimbledon Park &
Haydons Road Rail

Warranty Ground Rent

TBC

Payment Plan

£5000 on booking
10% after 3 months
Balance after completion

Tenure Service Charge

TBC

Tenure

Share of freehold 999 Year Lease



NAME AND SURNAME OF THE AGENT

Contact@thymehomes.co.uk

144 - 146 DURNSFORD ROAD, WIMBLEDON, SW19 8HJ

620 Western Avenue, London, W3 0TE

MISREP CLAUSE: These are not an offer or contract, nor part of one. You should not rely on statements by Barnhill Investments in the particulars or by word of mouth or in writing ("information") as being factually accurate about the property, its condition or its value. Barnhill Investments does not have any authority to make any representations about the property, and accordingly any information given is entirely without responsibility on the part of the agents, seller(s) or lessor(s). The images show only certain parts of the property as they appeared at the time they were created. Areas, measurements and distances given are approximate only. Regulations etc: Any reference to alterations to, or use of, any part of the property does not mean that any necessary planning, building regulations or other consent has been obtained. A buyer or lessee must find out by inspection or in other ways that these matters have been properly dealt with and that all information is correct. The VAT position relating to the property may change without notice. October 2023, carve-design.co.uk 16172/7